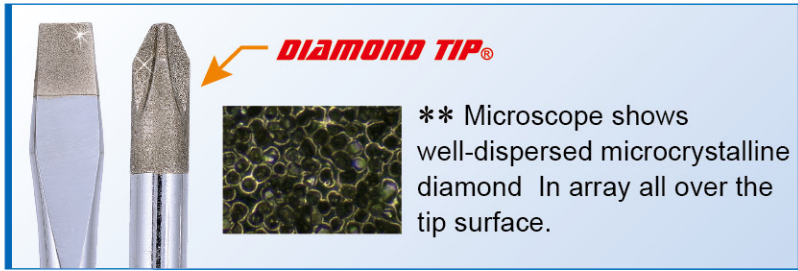




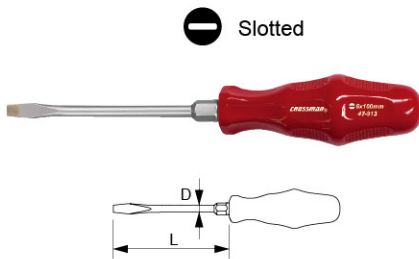
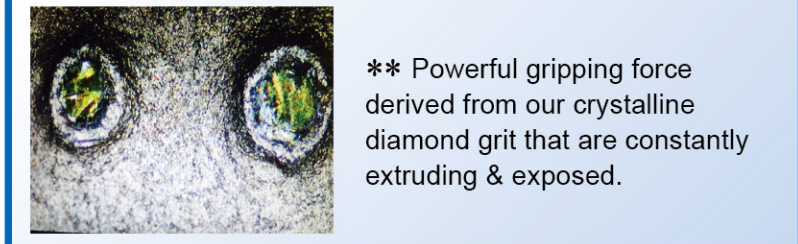
10X LONGER LIFE



Screwdrivers **DIAMOND TIP®**

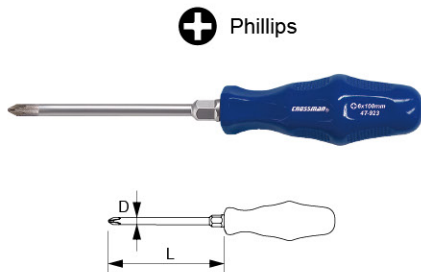


Diamond Tip is always there



■ Diamond Tip® Hex Acetate Handle Screwdrivers - Slotted w/Hex Bolster

Item No.	Pt. Size	Size (DxL)		📦	⚖️ kgs
		inch	mm		
47-911	5 mm	3/16" x 3"	5 x 75	12/300	0.8/20.0
47-912	5 mm	3/16" x 4"	5 x 100	12/300	0.9/22.1
47-913	6 mm	1/4" x 4"	6 x 100	12/240	1.2/23.0
47-914	6 mm	1/4" x 6"	6 x 150	12/120	1.3/13.0
47-915	8 mm	5/16" x 6"	8 x 150	12/120	2.1/21.8
47-916	8 mm	5/16" x 8"	8 x 200	12/120	2.4/24.4



■ Diamond Tip® Hex Acetate Handle Screwdrivers - Phillips w/Hex Bolster

Item No.	Pt. Size	Size (DxL)		📦	⚖️ kgs
		inch	mm		
47-921	PH1	3/16" x 3"	5 x 75	12/300	0.8/20.0
47-922	PH1	3/16" x 4"	5 x 100	12/300	0.9/22.1
47-923	PH2	1/4" x 4"	6 x 100	12/240	1.2/23.0
47-924	PH2	1/4" x 6"	6 x 150	12/240	1.3/13.0
47-925	PH3	5/16" x 6"	8 x 150	12/120	2.1/21.8
47-926	PH3	5/16" x 8"	8 x 200	12/120	2.4/24.4

- \*\* Crossman platinum shaft; hardened but high ductility.
- \*\* Handle is made of eco-friendly acetate w/fiber.
- \*\* Ideal for auto, agricultural machinery & equipments etc.

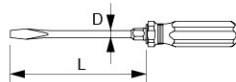


## Screwdrivers **DIAMOND TIP<sup>®</sup>**

### ■ Diamond Tip<sup>®</sup> Line Color Acetate Handle Screwdrivers - Slotted w/Hex Bolster

Item No.	Pt. Size	Size (DxL)		Pkg	kgs
		inch	mm		
47-630	5 mm	3/16" x 3"	5 x 75	12/300	0.8/20.0
47-631	5 mm	3/16" x 4"	5 x 100	12/300	0.9/22.1
47-632	6 mm	1/4" x 4"	6 x 100	12/240	1.2/23.0
47-633	6 mm	1/4" x 6"	6 x 150	12/240	1.2/24.0
47-634	8 mm	5/16" x 6"	8 x 150	6/120	0.7/13.5
47-635	8 mm	5/16" x 8"	8 x 200	6/120	0.7/14.5
47-636	10 mm	3/8" x 8"	10 x 200	6/60	2.4/24.0
47-637	10 mm	3/8" x 10"	10 x 250	6/48	2.6/20.8

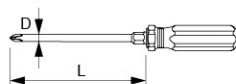
⊖ Slotted



### ■ Diamond Tip<sup>®</sup> Line Color Acetate Handle Screwdrivers - Phillips w/Hex Bolster

Item No.	Pt. Size	Size (DxL)		Pkg	kgs
		inch	mm		
47-640	PH1	3/16" x 3"	5 x 75	12/300	0.8/20.0
47-641	PH1	3/16" x 4"	5 x 100	12/300	0.9/22.1
47-642	PH2	1/4" x 4"	6 x 100	12/240	1.2/23.0
47-643	PH2	1/4" x 6"	6 x 150	12/240	1.2/24.0
47-644	PH3	5/16" x 6"	8 x 150	6/120	0.7/13.5
47-645	PH3	5/16" x 8"	8 x 200	6/120	0.7/14.5
47-646	PH4	3/8" x 8"	10 x 200	6/60	2.4/24.0
47-647	PH4	3/8" x 10"	10 x 250	6/48	2.6/20.8

⊕ Phillips

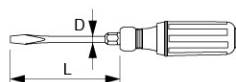


- \*\* Crossman platinum shaft; hardened but high ductility.
- \*\* Handle is made of eco-friendly acetate w/fiber.
- \*\* Ideal for auto repairing & mechanical & machinery etc.

### ■ Diamond Tip<sup>®</sup> Advanced Cushion Grip/Acetate Handle Screwdriver - Slotted w/Hex Bolster

Item No.	Pt. Size	Size (DxL)		Pkg	kgs
		inch	mm		
47-740	5 mm	3/16" x 3"	5 x 75	12/240	1.0/20.1
47-741	5 mm	3/16" x 4"	5 x 100	12/240	1.0/21.0
47-742	6 mm	1/4" x 4"	6 x 100	12/120	1.2/12.4
47-743	6 mm	1/4" x 6"	6 x 150	12/120	1.3/14.0
47-744	8 mm	5/16" x 6"	8 x 150	12/120	1.8/18.0
47-745	8 mm	5/16" x 8"	8 x 200	12/96	1.8/19.5
47-746	10 mm	3/8" x 8"	10 x 200	6/60	2.1/21.0
47-747	10 mm	3/8" x 10"	10 x 250	6/60	2.3/23.0

⊖ Slotted



- \*\* Crossman platinum shaft; hardened but high ductility.
- \*\* Handle is made of cushion-grip material for more powerful drive.
- \*\* Ideal for construction or furnishing work etc.

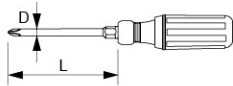


Screwdrivers **DIAMOND TIP®**

■ **Diamond Tip® Advanced Cushion Grip/Acetate Handle Screwdriver - Phillips w/Hex Bolster**

Item No.	Pt. Size	Size (DxL)		Pkg	kgs
		inch	mm		
47-780	PH1	3/16" x 3"	5 x 75	12/240	1.0/20.1
47-781	PH1	3/16" x 4"	5 x 100	12/240	1.0/21.0
47-782	PH2	1/4" x 4"	6 x 100	12/120	1.2/12.4
47-783	PH2	1/4" x 6"	6 x 150	12/120	1.3/14.0
47-784	PH3	5/16" x 6"	8 x 150	12/120	1.8/18.0
47-785	PH3	5/16" x 8"	8 x 200	12/96	1.8/19.5
47-786	PH4	3/8" x 8"	10 x 200	6/60	2.1/21.0
47-787	PH4	3/8" x 10"	10 x 250	6/60	2.3/23.0

⊕ Phillips

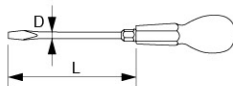


- \*\* Crossman platinum shaft; hardened but high ductility.
- \*\* Handle is made of cushion-grip material for more powerful drive.
- \*\* Ideal for construction or furnishing work etc.

■ **Diamond Tip® Sheffield Acetate Handle Screwdrivers - Slotted w/Hex Bolster**

Item No.	Pt. Size	Size (DxL)		Pkg	kgs
		inch	mm		
47-309	5 mm	3/16" x 3"	5 x 75	12/300	0.8/20.0
47-419	5 mm	3/16" x 4"	5 x 100	12/300	0.9/22.1
47-315	6 mm	1/4" x 4"	6 x 100	12/240	1.2/23.0
47-316	6 mm	1/4" x 6"	6 x 150	12/240	1.2/24.0
47-319	8 mm	5/16" x 6"	8 x 150	6/120	0.7/13.5
47-320	8 mm	5/16" x 8"	8 x 200	6/120	0.7/14.5
47-322	10 mm	3/8" x 8"	10 x 200	6/60	2.4/24.0
47-328	10 mm	3/8" x 10"	10 x 250	6/48	2.6/20.8

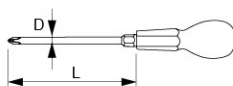
⊖ Slotted



■ **Diamond Tip® Sheffield Acetate Handle Screwdrivers - Phillips w/Hex Bolster**

Item No.	Pt. Size	Size (DxL)		Pkg	kgs
		inch	mm		
47-339	PH1	3/16" x 3"	5 x 75	12/300	0.8/20.0
47-429	PH1	3/16" x 4"	5 x 100	12/300	0.9/22.1
47-345	PH2	1/4" x 4"	6 x 100	12/240	1.2/23.0
47-346	PH2	1/4" x 6"	6 x 150	12/240	1.2/24.0
47-349	PH3	5/16" x 6"	8 x 150	6/120	0.7/13.5
47-350	PH3	5/16" x 8"	8 x 200	6/120	0.7/14.5
47-352	PH4	3/8" x 8"	10 x 200	6/60	2.4/24.0
47-358	PH4	3/8" x 10"	10 x 250	6/48	2.6/20.8

⊕ Phillips



- \*\* Crossman platinum shaft; hardened but high ductility.
- \*\* Handle is made of eco-friendly acetate w/fiber.
- \*\* Ideal for mechanical machine, mining or engineering sites etc.